

# Add-Ons & Upgrades (Page 1)



5 X 4 PRESSURE-TREATED RAMP



DOOR MAGNETS



DOUBLE WORKBENCHES AND LOFT



L-SHAPED WORKBENCH



18 X 27 WINDOWS WITH POLYVINYL SHUTTERS



18 X 36 WINDOWS WITH 3" AZEK TRIM



24 X 36 WINDOWS WITH POLYVINYL SHUTTERS



4-LITE FIBERGLASS DOORS



4-LITE DURATEMP DOORS



6-LITE ARCH PINE DOORS

# Add-Ons & Upgrades (Page 2)



9-LITE FIBERGLASS DOORS



9-LITE ARCH FIBERGLASS DOORS



11-LITE PAINTED FIBERGLASS DOORS



15-LITE FIBERGLASS DOORS



15-LITE ARCH FIBERGLASS DOORS



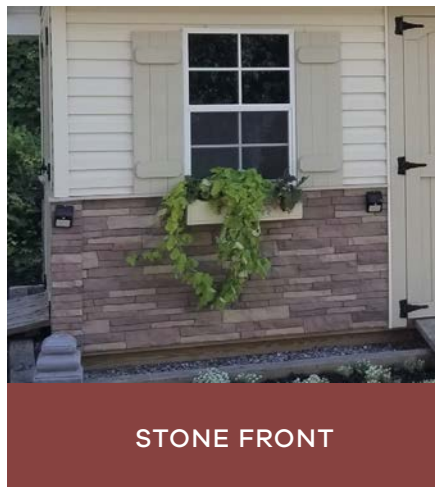
17-LITE FIBERGLASS DOORS



KNOTTY PINE INTERIOR WITH OUTLETS



NEW ENGLAND DORMER



STONE FRONT



WOOD CUPOLA



VINYL CUPOLA